

The image features two ceramic vessels against a dark, textured background. On the left is a light-colored, speckled ceramic vessel, possibly a jar or bowl, with a curved rim. On the right is a dark, solid-colored ceramic vessel, also with a curved rim. The lighting is soft, highlighting the textures of the ceramics.

Crafted in India.
Admired Worldwide



HANDCRAFTED LUXURY HOME DECOR

✉ info.globalconcreteexport@gmail.com

🌐 www.globalconcreteexport.com

📷 [_globalconcreteexport](https://www.instagram.com/globalconcreteexport)

☎ [+91 9660570538](tel:+919660570538)

📍 - FIRST FLOOR S-3 106 RIICO Madri Ind.
Near Unit – II Pyrotech, Udaipur – 313001



WHO WE ARE

At Global Concrete Export, we are innovators in design, meticulously crafting handmade objects that embody both intelligent design and environmental responsibility. Concrete, with its inherent versatility, serves as our foundational medium, allowing us to express our expertise across a spectrum of forms, colors, shapes, textures, and unique characteristics. We are deeply committed to developing products that are hand-casted and brought to life in close collaboration with a network of skilled local craftsmen. Our dedication to innovation has led us to pioneer and refine new techniques in mold and dye making, as well as distinct finishes such as sand, air-entrained, and terrazzo. Through these efforts, Global Concrete Export proudly creates eco-conscious, carbon-neutral products that possess an undeniable presence, elevating any setting they grace.



HOW WE STARTED

Our story began in 2018, within the humble confines of a small warehouse in Udaipur. From those beginnings, we have grown into a comprehensive manufacturing hub, specializing in Glass Fiber Reinforced Concrete (GFRC). Today, our extensive product line includes a diverse range of items such as elegant garden planters, sophisticated table planters, robust seating benches, stylish seating stools, versatile tiles, durable panels, and much more.

The heart of our operation is our dedicated team, comprised of highly skilled mold makers, precise pattern makers, talented carving specialists, meticulous casting professionals, and diligent craftsmen. Each member possesses a keen eye for detail, ensuring the exceptional quality of every piece.

Collectively, our team brings 8-9 years of invaluable experience in GFRC concrete, a testament to our expertise and commitment to excellence.



Our Superior Materials: Cast Concrete / GFRC

At Global Concrete Export, our commitment to quality begins with our materials, largely derived from nature itself. For our cast concrete, we meticulously combine essential ingredients: high-performance glass fibers, premium cement, rich pigments, fine quartz aggregates, and various specialized admixtures. Through our streamlined processes and consistent material sourcing, we achieve an unparalleled and uniform mix every single time.

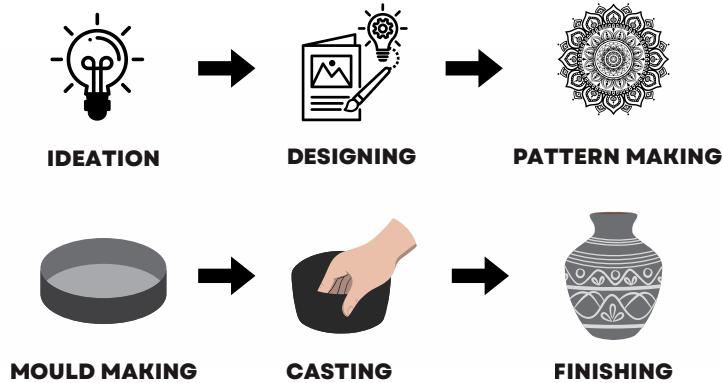
It's important to note that due to the natural properties of concrete, slight variations in color and surface texture may occur between batches. These unique characteristics are an inherent part of the material's beauty and should be appreciated as a testament to its organic origin.

A key advantage of our material is its inherent strength, which often eliminates the need for traditional metal reinforcement to a significant extent. The glass fibers we utilize possess exceptional tensile strength, making our products remarkably durable and entirely rust-proof. This innovative composition allows us to craft incredibly thin yet extraordinarily strong products, rivaling the strength of conventionally metal-reinforced concrete.



Our Precision Manufacturing Process

At Global Concrete Export, our manufacturing process is defined by a meticulously structured and rigorously quality-controlled approach. This unwavering commitment ensures that every single outcome is consistently flawless and free from error, every time.



The Enduring Advantages of Our Cast Concrete

Products crafted by Global Concrete Export offer significant advantages, beginning with their minimal carbon footprint. Designed for a lifespan exceeding 100 years, our cast concrete products are exceptionally durable and require very little maintenance. We further enhance their environmental and social value by utilizing locally available materials and collaborating with a dedicated team of local craftsmen.

- **Enhanced performance**
- **Designer element**
- **Customization**
- **Faster**
- **Affordable cost**
- **Low maintenance**
- **Low dust deposition**
- **Longer life**
- **UV protection**
- **Very high resistance to weather**



Unleash Creativity: Custom Color & Texture

At Global Concrete Export, we empower your vision with an expansive palette of colors and textures. We exclusively utilize the finest quality German-made pigments, ensuring vibrant, lasting hues for all our cast concrete products.

While we offer a refined selection of standard color options—primarily blended from foundational **reds**, **yellows**, and **blacks**—our true strength lies in our ability to realize your unique design aspirations. We enthusiastically offer custom color options tailored precisely to your project's specific requirements.



Your Vision, Our Process: Seamless Customization

Request a quote

Simply share your project details with us, and we will promptly provide you with a comprehensive quote.



Consultation & Designing

Our team is delighted to offer dedicated consultation and design assistance, guiding you through every creative decision.



Design Approval

Once you approve the final design, color, and size specifications, we move swiftly to the casting phase, ensuring efficient production.



Shipping

We meticulously pack your finished products and arrange for their safe and secure shipment directly to you.

INNOVATION & TECHNIQUES

We are always ready to hands on with techniques and innovative material feel free to discuss any ideas and process, we will be glad to shap it into a reality.

Triangular Planters

Size L1600xW1600XH700mm

Size -L1430xW960xH1040mm





Planter with Seating

Size - L1800 x W1200 x H750

Site Images



Exquisite Garden Planters

Our commitment to quality shines through in our exceptional garden planters. What could be more ideal for your outdoor space than a product with a lifespan measured in centuries? Each GFRC planter can be cast in any custom shape you desire, and our manufacturing capabilities allow for efficient mass production without compromising quality.

Our GFRC planters are engineered to be approximately 1.7 times denser, 0.6 times thinner, and undeniably stronger than traditional cement planters. Each piece is meticulously hand-casted with a four-layer, standardized mixture. This process includes a pigmented front coating that is designed to last a lifetime, unlike a painted cement planter, which can chip or fade. The three-layered back coating, a high-quality fiberglass concrete mix, fortifies the planter, making it durable enough to withstand the test of time.



LANDSCAPE GARDEN PLANTERS



Hazelnut (M) Planter

Height - 12"

Dia - 20.3"

Code - Lapl 31



Coffee Bean

Height - 24"

Dia - 17"

Code Lapl 120



Cylinder
Height - 24"
Dia - 15"
Code Lapl - 82



Corn (M) Planter
Height - 17.5"
Dia - 14.5"
Code - 61



Pine Nut (M)
Height - 18"
Dia 18.5"
Code - 72



Cube (S)

Length - 12"

Width - 12"

Height - 12"

Code - Lapl 11



Cuboid (S)

Length - 24"

Width - 12"

Height - 12"

Code - Lapl 21



Cuboid L. Planter

Size (LxBxH)

1250x350x350mm



Cylindrical Large
Height - 750mm
Dia - 600mm



Corn Large
Height - 21"
Dia - 17.5"
Code - 62





Peanut (M)

Height - 15"

Dia-16.5"

Code Lapl- 51



Cylindrical (small)

Height 310mm

Dia - 345mm

Code - Lapl 23



Cylindrical Fluted Planter
Size D400xH400mm





**Baby Terrazzo
Cylindrical Planter
Size D345xH310mm**



Square Planters
Size 12x12x12" (LxWxH)
Size 24x12x12" (LxWxH)



Square planters with 5mm Deep Groove
Size 750x750x750mm (LxWxH)



Cuboid Planters
Size 24x12x12"



Site Images



Site Images





Rect. Planter

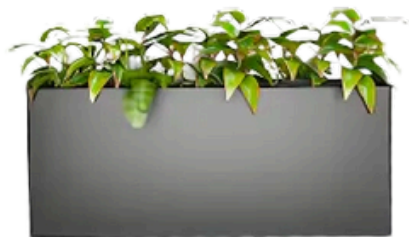
Length 1400mm
width 400mm
Height 400mm



Large Cuboid Planter

Length - 5'
Width - 2.5'
Height - 2.5'

Cuboid planters
Size L1000xW400xH300mm



Site Images

Large Fluted

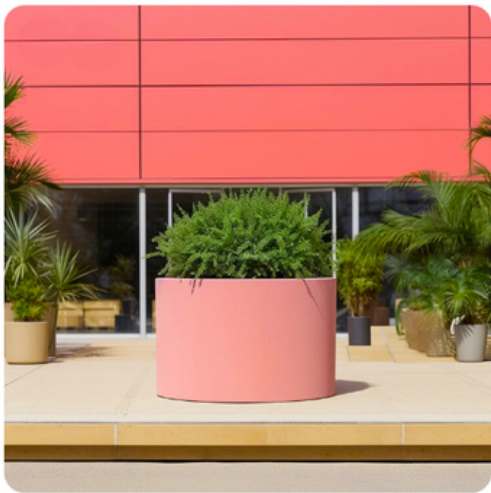
Planters

Size -D900×H750mm



Large Cylindrical planters

Size - D1400×H750mm



Round Fluted planter
Size - D600 x H1070mm



Site Images

Large Pinenut planter

Size D490xH1100mm



OUTDOOR FURNITURE



Concrete Benches



**Concrete
Terrazzo Stools**



Cylindrical Seating
Size D500xH450mm



Terrazzo Seating

Size 500X500X450mm (LxWxH)



**Concrete Garden
Stool**





Concrete Cylindrical Coffee Table

Height 450mm Dia - 700mm

Concrete Pebble & Stools

Our Concrete Pebbles and Stools are a testament to our versatility. Each piece can be hand-casted in any custom shape, and we have the capacity for efficient mass production. Our GFRP products are approximately 1.7 times denser, 0.6 times thinner, and undeniably stronger than products made from ordinary cement.



Site Images



Site Images



Site Images



Site Images



Site Images



Elegant Table Planters

Global Concrete Export offers a sophisticated range of table planters, accessories, and stationery, with the capability to produce thousands of pieces in a span of a month or so. We have an in-house team of designers and a 3D printing facility. This allows us to replicate any custom shape design without any extra cost.



Table Objects



Tesselated planter

Size (D X H) 120X90MM

Weight - 950G

Code - tbpl 03



Cylindrical Planter

Size (D X H) 90X60MM

Weight - 460G

Code tbpl 06



Octagonal Planter

Size (D X H) 115X70MM

Weight - 750G

Code - tbpl 10



Simply Square Planter

Size (LxBxH)

90X90X90MM

Weight 800G

Code tbpl 16



Hexagonal Planter

Size (DxH) 120X60MM

Weight - 700G

Code - tbpl 05



Micro Cylinder Planter

Size (DxH) 80X55MM

Weight - 225G

Code - tbpl 13

Pendant lamps
Size D250×H300mm



Site Images



Bulba Lamps
Size D11.8xH7.3"



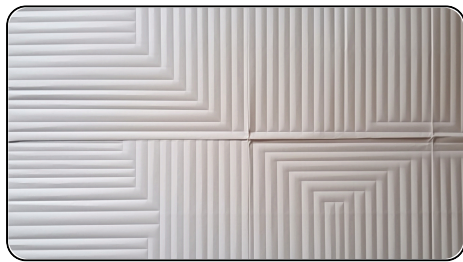
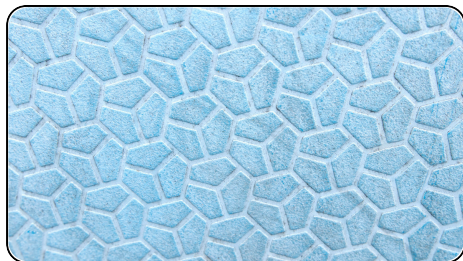
ARCHITECTURAL SURFACES:

3D Wall tiles & Panels, Jaalis and Breeze blocks

Global Concrete Export specializes in a wide range of architectural surfaces, offering several 3D Wall tiles, Flat and Twisted panels, Breeze blocks, and Cast concrete jalis, all with customizable options. Our innovation extends to creating 3D Wall tiles with integrated LED light modules. We also produce wall panels with integrated optical fiber lighting and Lumstone Slabs, which are customizable acrylic-based light panels.



ARCHITECTURAL SURFACES: 3D WALL TILES, FLAT WALL PANELS, JAALI & BREEZE BLOCK RANGE



Site Images

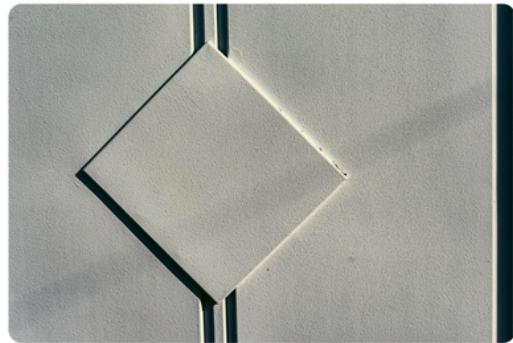


GFRC Facade



GFRC Wall Panels

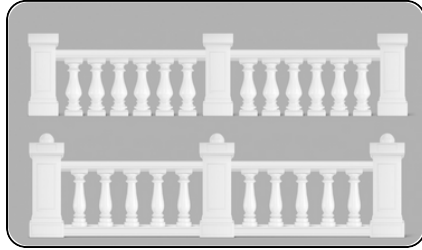
Size - 2000x200mm



Our Products



GFRG Cornices



GFRG Balustrade



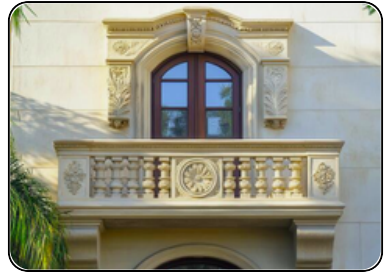
GFRG Capital



GFRG Dome



GFRG Keystone



GFRG Window

GFRC columns

GFRC columns are typically clad onto existing concrete columns to serve as a decorative and visually appealing architectural element. These columns can be produced with a white smooth finish, which is ready to be painted, or with a pigmented/sand finish



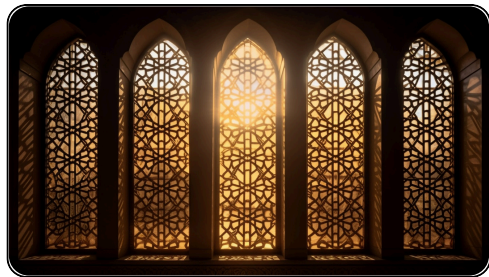
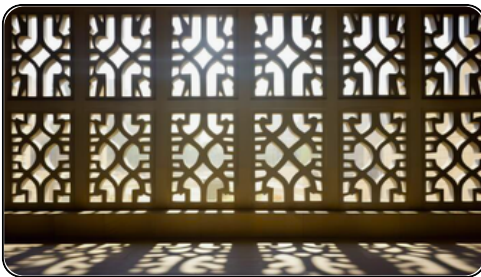
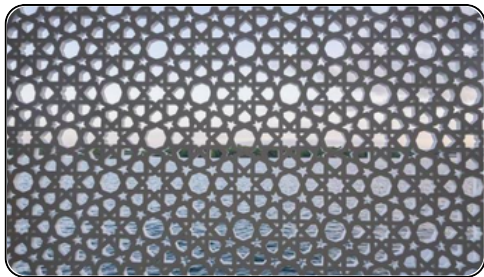
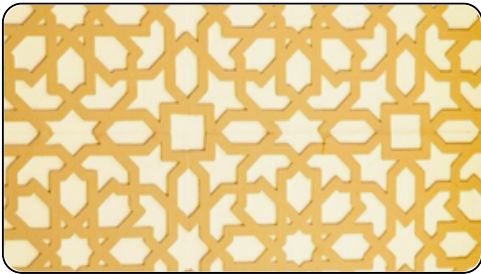
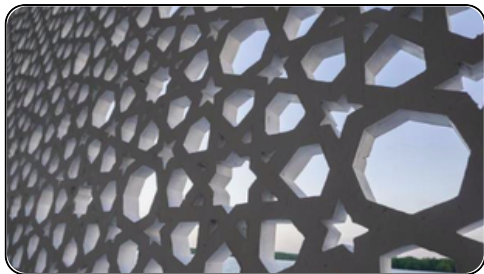
GFRC Jali



GFRC Jali



GFRC Jali



Site Images



FRP Statue

Size -H10'xW3'

We create stunning FRP (Fiber-Reinforced Plastic) statues. FRP is a composite material consisting of a polymer matrix reinforced with various fibers. The most common fibers we use are glass, carbon, aramid, or basalt. In some rare cases, we may also incorporate other fibers like paper or wood. Our statues, such as the one shown, are crafted to impress and stand out.



GLOBAL CONCRETE EXPORT

HANDCRAFTED LUXURY HOME DECOR

✉ - info.globalconcreteexport@gmail.com

🌐 - www.globalconcreteexport.com

📷 - [globalconcreteexport](https://www.instagram.com/globalconcreteexport)

📞 - [+91 9660570538](tel:+919660570538)

📍 - FIRST FLOOR S-3 106 RIICO Madri Ind.
Near Unit – II Pyrotech, Udaipur – 313001

The name "Global Concrete Export" and all associated designs are registered trademarks of Global Concrete Export. The copying, replication, modification, and reproduction of our products, designs, and graphics for any purpose is strictly prohibited without the prior written consent of Global Concrete Export.